

Calendar of Events

Water	Canceled
Family Week	Aug. 3-7
Staff Retreat.	Sept. 17 - 18
First Term	Sept. 19 - Oct. 29
Choir Ministry Tour	Oct. 18 - Oct. 29
Journey	Oct. 18 - Oct. 29
Wrap-up.	Oct. 30
Second Term	Nov. 2 - Dec. 11

- Priority enrollment for 2020-2021 has been extended to June 1. After that date applications will be processed on a first come, first served basis.
- Contact the office for a full catalog and application materials, or visit us at SMBI.org for class schedules and descriptions, student handbook, application materials and more.

Family Week 2020

August 3-7

Technology, My Family, and Me (Men)
— Michael Burkholder
Pondering the Path of My Feet (Ladies)
— Laura Burkholder
You Are What You Love (Youth)
— Leroy Hershberger
Eyes to See, Ears to Hear (All)
— Clifford Schrock
What is Story Telling and Why Does it Change Us (Adults) — Leroy Hershberger
Foundations for Eternity (Youth)
— Kenneth Martin

During the morning, child care is provided for the 0-5 year olds, and there are classes for the 6-12 year olds, youth, and parents. In the afternoon, there are additional activities, free time and more with chapel and recreation in the evening.

For more information and registration visit us at SMBI.org

Open Hands

Open Hands

By Adam Peters

Clenched and tightened hands
I open unto thee.
Take, O Thou, my plans.
I give it unto Thee.

Open up my hand,
And my life release.
Thy promises will stand.
Grant to me Thy peace.

I've opened up my hands
To clasp them fast with Thine!
Your love for me expands.
My hands are clasped with Thine.

Lead me by Your hand,
Through waters and the fire.
My will at Your Command
To clasp Your hand the tighter.

Our Solid Foundation

By Anna Brubaker

With open hands we come to thee,
Seeking to surrender our hearts.
We struggle to give up our plans,
To watch our hopes and dreams depart.

Oft we find that our trust does lie
In our earthly treasures.
We try to hold what lies so dear,
But then we tend to live in fear.

Shake from us any foundations
That are no foundations at all.
Show us the idols that we trust;
That only on Thee will we call.

When things of the world are shaken,
Guide us to live at rest in Thee,
Knowing the Rock beneath our feet
Never will waver or retreat.

Give us desire for you alone!
To one day kneel before your throne.
Praising God with adoration
The only true, firm foundation.

On Term Closing

By Joella Wadel

Taken abruptly to a final verdict,
Our hearts surfed the jagged line.
Uncertain of fellowship together,
We did not know the length of time.

Now given three more days 'til parting,
Our bond is built on every moment here.

SMBI has blessed our hearts.
The staff have changed our lives.
We journey on with open hands,
And pour ourselves like wine.

All this is for you, Lord.
The Satan cannot break into your purpose,
For out of unlikely circumstances,
You bring forth your people!

Return Service Requested

Sharon Mennonite Bible Institute
7304 Lincoln Hwy., Harrisonville, PA 17228
ph 717.485.4341
fax 717.485.0641
smbi@smbi.org
smbi.org



Open Hands (Cont.)

If you read the poems on the front page, you probably noticed a theme of “open hands.” While written independently, this is no accident. It was one of the significant life-lessons that God was teaching us as one by one dreams and plans were stripped away- visitors and travel, friends and family for graduation, choir tour, and finally recording and an optional three-week special term that was briefly considered. It was a painful, but rich time as we went through the struggle together.

A verse that also became a theme for the journey was, “Stand still and see this great thing that the Lord will do before your eyes.” (I Sam. 12:16 ESV) It certainly is not easy standing still and waiting, but, again, it is such an important life lesson. So many times in life, God asks us to just wait and trust. When we rest and seek God, it changes our per-

spective in so many situations.

Despite all the losses, we were grateful for the experiences God allowed us to have. In cooperation with the local PA State Patrol, the SMBI association kept us in session until we finished the term on April 2. We were able to livestream graduation and a closing choir program. We stayed healthy. Nearly three weeks “locked-down” together on campus allowed us to experience brotherhood in ways seldom possible. God truly did do a good work that only eternity will fully reveal.

Obviously, COVID-19 has not gone away and does not seem like it will any time soon. There are plenty of struggles for all in many different ways. As we continue this journey, live with open hands. Watch and listen for God’s work in your life and around you. Discover what he wants to do in and through you. Trust and rest in the One that holds yesterday, today, and tomorrow in His capable hands.

Housing Update

On May 3, 2019, the SMBI Association decided to make an offer on 17.7 acres with an existing house and outbuildings adjacent to the campus. The owner counter-offered with a selling price of \$265,000 which the association accepted on June 17, 2019. That same day, a donation was received for the down payment and later a purchase agreement was signed with a closing date of July 30, 2020.

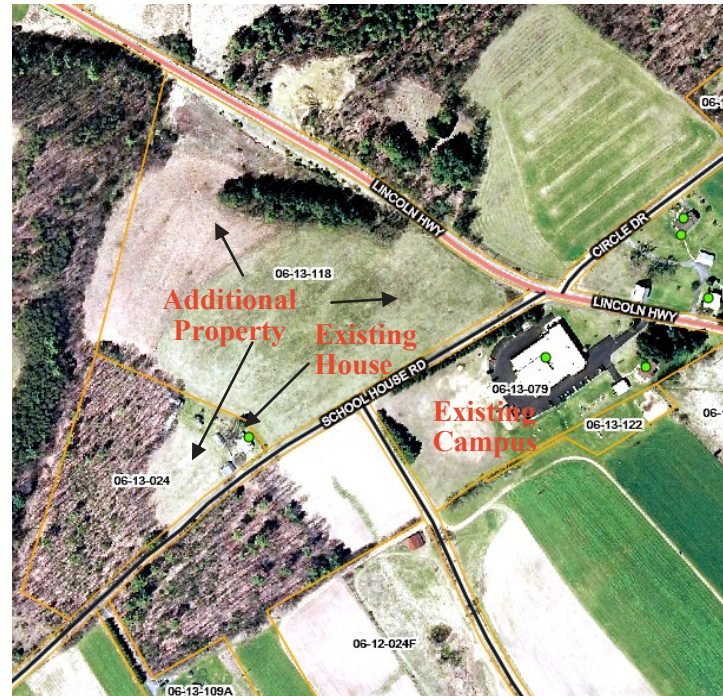
It has been an exciting faith journey as God has provided funding through His people. We are anticipating how He will complete what He has begun. The current economic and social challenges are not beyond His control.

Already we are reaping benefits from this purchase although settlement is not complete. On May 1, we were able to discontinue rental of the “Hines House.” From association minutes, the Harry Brenneman family first lived in this house in the summer of 1979. It cannot easily be verified if SMBI rented it consistently all 41 years since, but certainly most of the time. It has served us well and it was with some nostalgia that we turned it back to the Methodist Parish, but the monthly rent bill will not be missed. We continue rental of a second house that SMBI has also rented for many years.

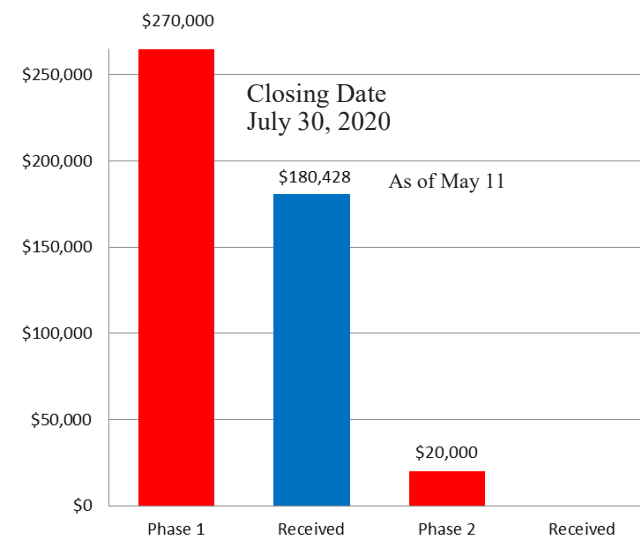
As use plans have been developed for the new property, the association and facilities committee have identified several phases.

- Phase 1, of course, is the land purchase. The cost of this phase includes the purchase price and closing costs for a total of \$270,000.
- Phase 2 is the Project and Land Development Plan. This includes engineering, prints, permits, and sewer tests at an estimated cost of \$20,000.
- Phase 3 is construction of a staff house for expanded housing.
- Phase 4 is construction of another staff house to replace the rental housing.
- Phase 5 is additional land use developments.

If you wish to contribute to this project, checks may be sent to the SMBI office noted for the “housing fund.” Donors who wish to support this project anonymously may do so through the Anabaptist Foundation. Make your gifts payable to “Anabaptist Foundation” with “SMBI Housing Fund” written on the memo line of your check. Mail these contributions to: Anabaptist Foundation, 55 Whisper Creek Drive, Lewisburg, PA, 17837.



Housing Fund - Land Purchase



~Births~

Galen and Elizabeth Bricker
~ Concetta Aria

Shawn and Gina (Lehman) King
~ Cheris Shavonne

Galen and Carrie (Hershberger) Schrock
~ Colson Grant

Mahlon and Charity (Miller) Stoltzfus
~ Boaz John

Riley and Katharina (Stoltzfus) Weaver
~ Rivkah Katriel

Elvin and Melanie (Slabach) Yoder
~ Theodore David

Fourth Term Tour

Fourth term tour was schedule to travel through OH, IN, IL, MO, KS, CO, UT, TX and back through AR, MS, GA, and SC. As COVID-19 broke and the country and churches shut down, the tour became another victim of the times.

Gratefully, the choir was able to present a livestream program to close out the term. This presentation, “Lord of My Heart” can still be viewed on YouTube. Search for Sharon Singers 2020.

If it becomes possible to travel and gather as groups later this summer, the choir may reconvene for a shortened tour. Watch the itinerary page at SMBI.org or our Facebook page for announcements.

WATER 2020 Cancelled

With 46 students preparing to come from 10 states, 2 provinces, and Belize and planning to spread out across 14 countries on 5 continents and central America, we were left with little choice but to cancel this year's WATER program in the face of COVID-19. It was shaping up to be an excellent year and it is with great disappointment to all that this decision was made. Pray for these students as they find new ways to continue their journey and invest in the kingdom of God. Pray for the mission staff spread around the world as they navigate these uncertain times and unusual circumstances.

Operating Funds

User contributions provide nearly 2/3 of the operating budget for SMBI. With the cancellation of fifth term, WATER and the potential loss of rental income over the summer, general operating funds quickly become a challenge. We thank those who have already seen this need and contributed. If you wish to contribute, checks may be sent to the office or you can contribute through the support page at SMBI.org.



Set up a recurring contribution on the support page at SMBI.org. Expand the impact of “small dollar donations.” Every dollar counts!



Logan Weaver, Anna Brubaker, Rance Clay, Stephanie Kuhns, and Justin Kuhns

Congratulations, Graduates!

First Term Course Schedule

September 19 - October 16, 2020

Gospel and Culture ~ Elijah Yoder
The Devoted Life ~ Byron Wolfer
Joshua/Judges ~ Larry Bergey
James ~ Elijah Yoder

Music Theology and Ministry– Samuel Heatwole
Developing the Servant ~ Larry Bergey
Discovering Our God ~ Clifford Schrock

Choir Ministry Tour ~ October 18-29
Journey (Canoeing and Hiking Trips) ~ October 18-29



Like us on FaceBook:
Sharon Mennonite Bible Institute

~Weddings~

Myron Zimmerman and Jordyn Stewart ~ 3.20.20

Carl Yoder & Monica Forry ~ 4.5.20

Nathan Peters and Clarissa Miller ~ 4.11.20

Cody Crutch and Shaila Schmidt ~ 4.25.20

Andrew Hinds and Esther Brenneman ~ 5.9.20