

## Calendar of Events

- Fifth Term** ..... April 11 - May 19
- Priority Registration Ends ..... May 1
- Missions Involvement ..... April 22 - 24
- Choir Tour ..... May 20 - 26
- W.A.T.E.R.** ..... June 20 - July 29
- Family & Youth Week** ..... Aug. 1 - 5
- Staff Retreat** ..... Sept. 15 - 16
- First Term** ..... Sept. 17 - Oct. 27
- Second Term** ..... Oct. 31 - Dec. 8
- Christian Nurture Conference ..... Nov. 11 - 13
- Choir Tour ..... Dec. 9 - 16

2016-2017 Course Catalogs are now available.

## Fourth Term Tour

April 1-22, 2016

- April 1 Fly to Los Angeles, CA
- April 2-6 Ministry & Programs in California
- April 7 Hopewell Menn.—Hubbard, OR
- April 8 Cascade Valley Church—Ellensburg, WA
- April 9-15 Travel & Programs in Canada
- April 17 Bonners Ferry, ID/Thompson Falls, MT
- April 18-19 Travel / Sightseeing
- April 20 Linn Menn. Church—Roanoke, IL
- April 22 Bethel Menn. Church—Nappanee, IN
- April 23 Return to SMBI

For additional details see the tour itinerary at [www.shraroningers.com](http://www.shraroningers.com).

## Fifth Term Tour

Ohio, Pennsylvania  
Virginia, West Virginia

[www.sharonsingers.com](http://www.sharonsingers.com)

A Quarterly  
Newsletter Of  
Sharon Mennonite Bible Institute  
Vol. 42 • Issue 01

# 01

January - March 2016

# the Monitor

## First Things

A student recently asked me, “How do you know what the balance is between homework and your relationship with God.” At our recent Missions Conference, a student led a devotional on the importance of personal discipline in the Christian life. Earlier this term, I presented a chapel message on the New Testament interplay between the conclusion of James at the Jerusalem Conference, James’ later argument for faith that works, Paul’s concern that the Galatian church was falling back into Judaism, and Paul’s full theological exposition on justification in the book of Romans.

You may wonder what the relationship is between these scenarios, but when examined they all present contrasting ideas. When faced with a question like homework versus relationship with God, it is easy to develop an either/or thought pattern. However, each of these are illustrations of a concept presented during our recent ministers’ week- the relationship of first and second things.

For example, Jesus clearly identified the *first* commandment as, “Thou shalt love the Lord thy God with all thy heart, and with all thy soul, and with all thy

mind.” And the second is like it, “thou shalt love thy neighbor as thyself.” It is easy in this situation to see that the second should not become first or we end up with a social gospel. It is equally easy to see that we should not abandon the second to “give ourselves fully to the first.”

Another first is, “Seek ye *first* the kingdom of God, and his righteousness, and all these things shall be added unto you.” Clearly, we are to eat, drink, and wear raiment, but they are servants to the first thing.

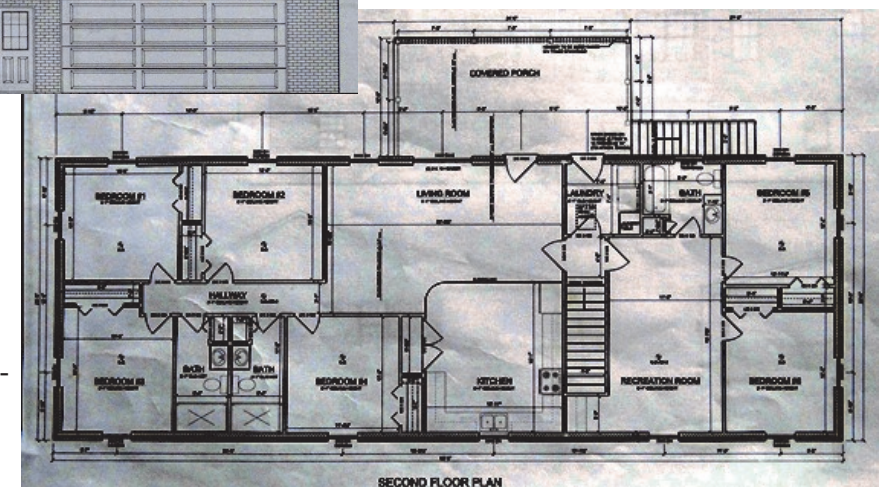
So, whether the discussion is about homework, the role of personal discipline in the Christian life, or the old debate of faith versus works, we can avoid the either/or mentality. Rather ask, which is first and provides a foundation and context for the other and which is closely connected, but secondary to the first.

As you evaluate your life, what are the first things? Have some secondary things become primary? Have you abandoned some second things, or maybe even see them as dangerous? May we daily “prove what is that good, and acceptable, and perfect, will of God.”

by: Clifford Schrock

## Building Project Update

### 2nd Floor Plans



The SMBI campus began in 1977 with a school building constructed in the 1920’s. In the early 80’s a house was added. In the late 90’s, there was a major addition to and renovation of the main building. In the early 2000’s, a house at School House Village, and the brick structure pictured above were added. Now, we await the final step in the tedious permit process required for additional staff housing. Lord willing, construction will begin in May. If you have interest in contributing labor, materials, or finances to this project please contact the office.

Return Service Requested

Sharon Mennonite Bible Institute  
7304 Lincoln Hwy., Harrisonville, PA 17228  
ph 717.485.4341  
fax 717.485.0641  
smbi@smbi.org  
smbi.org



NON-PROFIT ORG.  
U.S. POSTAGE PAID  
PERMIT NO. 15  
MERCERSBURG, PA 17236



## ~Births~

Ben & Maria (Petersheim) Beiler

~Claudia Grace

Aaron & Barb (Schrock) Bontrager

~Marissa Jewel

Marvin & Martina (Kauffman) Charles

~Charlotte Anne

Philip & Julie (Byler) Eicher

~Dawson Layne

Duane & Crissy (Beiler) Fisher

~Dervin Kent

Benjamin & Ann (Fisher) Good

~Lance Everett

Lucas & Anne (Yoder) Hilty

~Elliot Daniel

Arlyn & Sue (Wagler) Kauffman

~Elijah Simon

~Eden Joy

Graham & Adrienne (Krabill) Lichti

~Dietrich William

Darren & Janae (Miller) Miller

~Lia Kate

Jeremy & Lynnae (Hartzler) Mummau

~Braden Lee

Lavon & Beth (Atkinson) Slabaugh

~Katelyn Joy

Lynford & Rachel (Petersheim) Slabaugh

~Gabrian Elijah

Jason & Dorcas (Nissley) Siegrist

~Brielle Grace

Chris & Sylvia (Beachy) Stoltzfus

~Jaxon Roy

~Gracie Ava

Jared & Carmen (Stoltzfus) Stoltzfus

~Zoe Jane

Doug & Elizabeth (Nissley) Yutzky

~Amber Brooke

# NEW CD RELEASE



Sharon Mennonite Bible Institute has just released a Spanish Cd entitled

## **Lift Your Glad Voices**

CD includes

“Alleluia”

“Hijos de Dios”

“Santo, Holy”

“Lift Your Glad Voices”

“Oh, Cristo Mio”

Plus 8 others

**Spanish cd  
Produced for  
Mission work.**

Price: Retail - \$6.00  
Ministry Related - \$2.75

Recorded by Altar of Praise Studio, Leola, PA.

To order please contact us at: Sharon Mennonite Bible Institute  
7304 Lincoln Hwy. Harrisonville, PA 17228 - #717-485-4341 or email at [smbi@smbi.org](mailto:smbi@smbi.org)

## We have room for more students & families to enroll in 5th term, 2016.

Our new 2016-2017 catalogs/handbooks are now available.

\*The course catalog and student applications are available at [smbi.org](http://smbi.org).

\*\*Contact your local church or call/email SMBI for more information or a catalog.

\*\*\*Catalogs are shipped to international addresses only by request, due to high postage rates.

*W.A.T.E.R.*

*June 20 - July 29, 2016*

World Awareness Training In Evangelistic Responsibility

We welcome you to join us for a week of training at SMBI and then join a mission team in the U.S., Mexico, Belize, Spain, Guatemala, Ireland, Southeast Asia, & more for 4 1/2 weeks in ministry.

There are over 25 locations to choose from and several new locations this year.

**Young men, especially, are needed!** Come prepared to bless and be blessed.

**2016 Ministers Week Sessions CDs are being reproduced and available to buy.**

**Please contact the office or Elijah Yoder if you would like a copy.**

**Following are the dates for Ministers' Week, 2017: February 13-17.**

### ~ New Faculty ~

SMBI alumni, Graham and Adrienne Lichti come to us from Zion Mennonite Fellowship in Brussels, Ontario with their children Kendon, Hudson, and Dietrich. With a passion for music, Graham taught Class Voice and directed the choir during fourth term.

Kenneth & Mildred Ranck come to us from the Bank Mennonite church in Harrisonburg, VA. A retired teacher and school principal, Kenneth taught Reformation Studies and Lives of Great Christians during fourth term.



## ~Weddings~

Ricky Martin & Jasmine Shantz ~ 11.28.15

Jared Miller & Charlene Stoltzfoos ~ 2.6.16

Daniel Peters & Sarah Cover ~ 3.11.16

Chadwin Stoltzfus & Kaylie Lapp ~ 3.12.16



Urban Ministry - Washington DC

### Discipleship Groups

First Term Enhanced incorporates personal discipleship through small group meetings and a Friday evening - Saturday event.



## First Term Enhanced Sept. 17 - Oct. 27, 2016

**Music Ministry** is a small group which travels to some of the urban locations providing music ministry and support to those teams.

**Urban Ministry** is an opportunity for hands on experience in urban ministries. Opportunities may include homeless shelters, hospitals, kids clubs, community service, etc.



Ministry in Wilkes-Barre, PA

**Wilderness Development** takes the student into the wilderness to continue the training and personal growth established during term. Intense canoe or hiking trips provide opportunity to deepen relationships with God and others.



Music Ministry Team



Ladies' Wilderness Trip